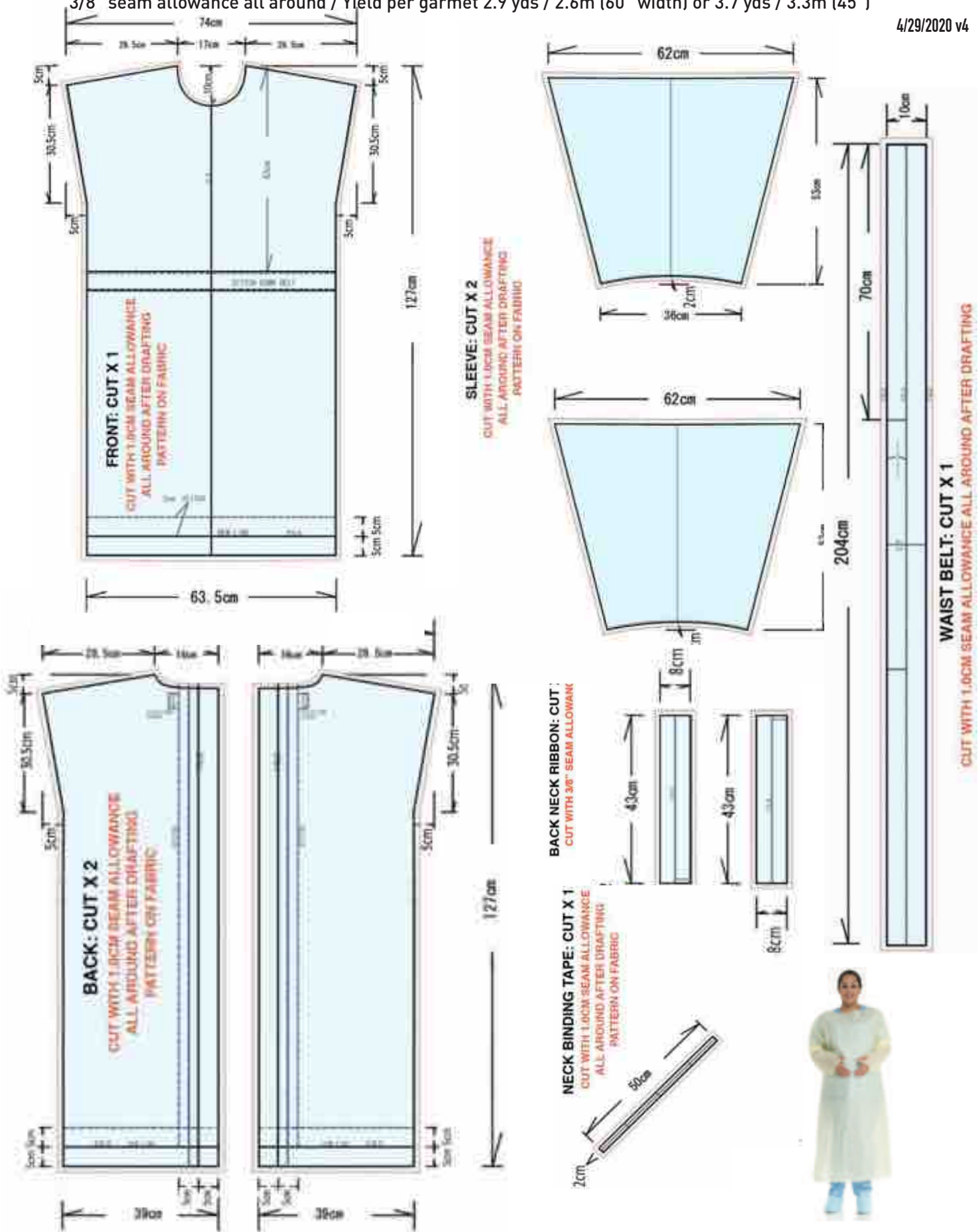


Modified: Size L Pattern based on HALYARD AAMI Level 2 Over-The-Head Isolation Gown and Elastic Cuffs
 3/8" seam allowance all around / Yield per garmet 2.9 yds / 2.6m (60" width) or 3.7 yds / 3.3m (45")

4/29/2020 v4

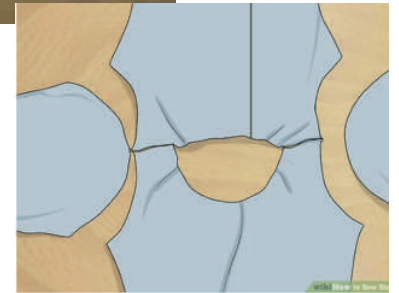


SEWING INSTRUCTION :

1. After cutting all parts, finish seam allowance of FRONT, BACK, and SLEEVE with serge/overlock. Do not serge/overlock the neckline of FRONT, BACK and hem of SLEEVE.



2. Sew the shoulder seams of FRONT and BACK.



3. Attach the elastic tape to the hem of the SLEEVE, by stretching the elastic to match the measurement of the sleeve opening.

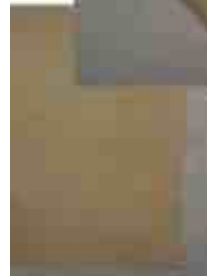
4. Sew the armhole of the SLEEVE to the armhole of the FRONT and BACK. Sew along the bottom edges of the SLEEVE and along the sides of the gown body.



5. Fold over the edge of the body hem by 6.0 cm two times and sew with a 5.0 cm top stitch.



6. Fold over the right BACK and left BACK center back edge by 6.0 cm two times and sew with a 5.0 cm top stitch.



7. Fold the NECK BINDING TAPE in half to create a 1.0 cm width tape. Insert the neckline of body between the tape and sew together with edge stitch.

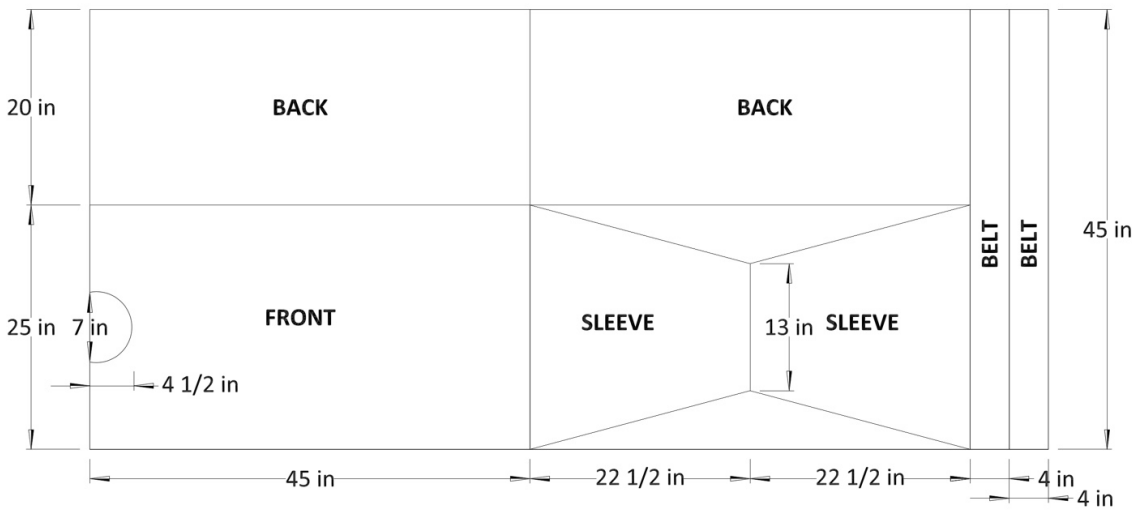
8. Create two 4.0 cm width BACK NECK RIBBONS.

Sew the BACK NECK RIBBONS to each side of the BACK, 2.5 cm below the back neck point and 7.5 cm from the edge of the center back.



9. Create one 5.0 cm width WAIST BELT. Sew the WAIST BELT to the FRONT, 53 cm below the side neck point, from side seam to side seam.

1. Best Cutting Layout award goes to... Miles from Canada!!! Genius simplicity yet great looking gown!



"We used three bolts of 45" (30 yards or 27.4 meters each) to produce 39 gowns. Our sleeves were a bit larger and proved to be a bit more comfortable. We used the selvages as the centers of the back so no additional finishing was needed." Genius!!!



2. Best alternative material award goes to Paramedic Amy Dyer Drinkwater and Lynne Dyer in Maine. Shower curtains and socks for cuffs. They made it longer because "they kneel a lot." The cuff, designed by Ramona, is made from the top of ribbed socks — "a sturdy nylon blend, not cotton, and stretchy — and fits snugly at the wrists, but is comfortable enough to manipulate."



3. New Designer Announcement: We heard the rumor Kathy Haynie from Oregon will be the next designer for Balenciaga, and her husband will walk the runway this fall (if fashion week is still held). "I stayed with the triangular sleeve since the Tyvek doesn't have much "give." The Tyvek is only 36" wide, so I adapted the pattern to work within the available width."



4 Alternative Tool Award: Linda came up with a genius idea of using 10" bowl to make a neckline. Also she is one of many who got rib knit for cuffs, which also make it possible to make thumbhole cuffs.



Tyvek Surgical Gowns by Kathy Haynie -- April, 2020

Use Tyvek or generic brand 36" x 100' Makes 10 gowns - size large

Cutting dimensions:

Gown

Overall dimension (front & back) 90" x 36" Cut 45" up the middle to make the back

- Mark the center of shoulder on each side
- Mark the position of the ties: 18" down from shoulder
- 1 at the center back edge of the gown
- 1 positioned 6" in from center back edge of gown

Cut neck hole in center front of gown 8" x 1.5" (make a cardboard template)

Sleeves

Cut 1 piece 30" x 36"

Cut in half lengthwise to make 2 pieces 30" x 18"

Fold these pieces in half to make 2 folded pieces 15" x 18" Cut the sleeve shape:

- With the 18" fold on the left, measure 6" to the right of the fold, and cut diagonally from the 6" mark to the upper right-hand corner of the folded piece.
- Mark the center of the upper sleeve with a pen

Cuffs

From the excess fabric left after cutting the sleeves

Cut 4 rectangles 6.5" x 4"

Overlap by 1/2" and sew 2 rectangles together to make a cuff 12" x 4"

Elastic

For each cuff, cut 8" elastic, sew to cuff

Ties

Cut 1.5" wide strips from leftover fabric after cutting the cuffs

Fold into thirds, sew into long strips, joining a new strip to the existing strip while sewing through the machine. Total 840" of ties needed for 10 gowns.

Sewing instructions

1. Sew 8" elastic to cuff.
2. Sew cuff to sleeve at wrist, right sides together.
3. Sew back ties to gown.
4. Sew sleeves to gown, centering centers at shoulder.
5. Sew side / underarm seams of sleeves / gown.
6. Sew neck tie to gown, beginning 16" from end of tie (neck tie is 52" length total)

Mark the 6' sewing table at: 30", 18", 16", 9" to aid in cutting the pieces more easily.

6. Fold over the right BACK and left BACK center back edge by 6.0 cm two times and sew with a 5.0 cm top stitch.

7. Fold the NECK BINDING TAPE in half to create a 1.0 cm width tape.

Insert the neckline of body between the tape and sew together with edge stitch.

8. Create two 4.0 cm width BACK NECK RIBBONS.

Sew the BACK NECK RIBBONS to each side of the BACK, 2.5 cm below the back neck point and 7.5 cm from the edge of the center back.

9. Create one 5.0 cm width WAIST BELT.

Sew the WAIST BELT to the FRONT, 53 cm below the side neck point, from side seam to side seam.



Sustainability Award: Gowns Made from Fitted Bedsheets & Tips from Carol -- April, 2020

Fitted Sheets (yes repurpose elastics!!!!--how genius is this idea???)
Most sustainable x leadership award to Carol in Idaho.

“Our group has made 35 gowns so far and I may make another 5 to fulfill the request by FMRI. One of the local mask making groups have donated 120 and I will be making about 30 more masks in the next few days. I believe that will meet the needs of the clinics in residency program.” Congrats to Carol and her team!!! It’s also such a sustainable solution.

Tips #1
I found it easiest to serge the neck front and cuffs first

Tips #2 Adding Elastic to the Cuff
I left the opening so that the elastic could be tightened if necessary.

Tips #3
I used the existing hemmed edges of the sheets rather than serving them whenever possible.

Tip #4
I cut the belt in half and sewed it into the side seam 18” down from the top of the shoulder.



Level 1/2 Isolation Gown (COVID-19 Crisis Response)		Design Page	
Style No	IG1/2	Fabrication	Cotton Poly OR Polyester (sampled in muslin)
Description	Re-engineered Isolation Gown	Initiated by	Fashion Girls for Humanity
Date	4/30/20	Created by	Fashion Girls for Humanity x Overcoat



FRONT

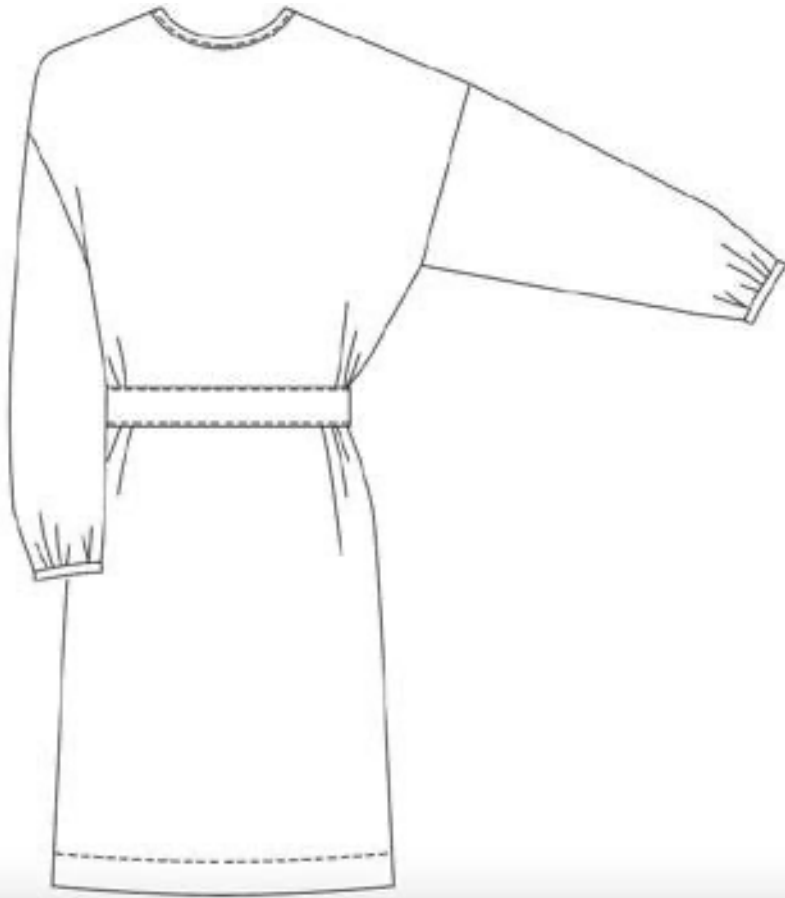


BACK

LEVEL ½ ISOLATION GOWN (COVID-19 CRISIS RESPONSE)**DESIGN PAGE**

STYLE NO		FABRICATION		INITIATED BY	FASHION GIRLS FOR HUMANITY	PAGE	1
DESCRIPTION	ISOLATION GOWN	FABRIC WIDTH		CREATED BY	FASHION GIRLS FOR HUMANITY	DATE	

FRONT STYLE



BACK STYLE



MEMO

MATERIAL LIST :

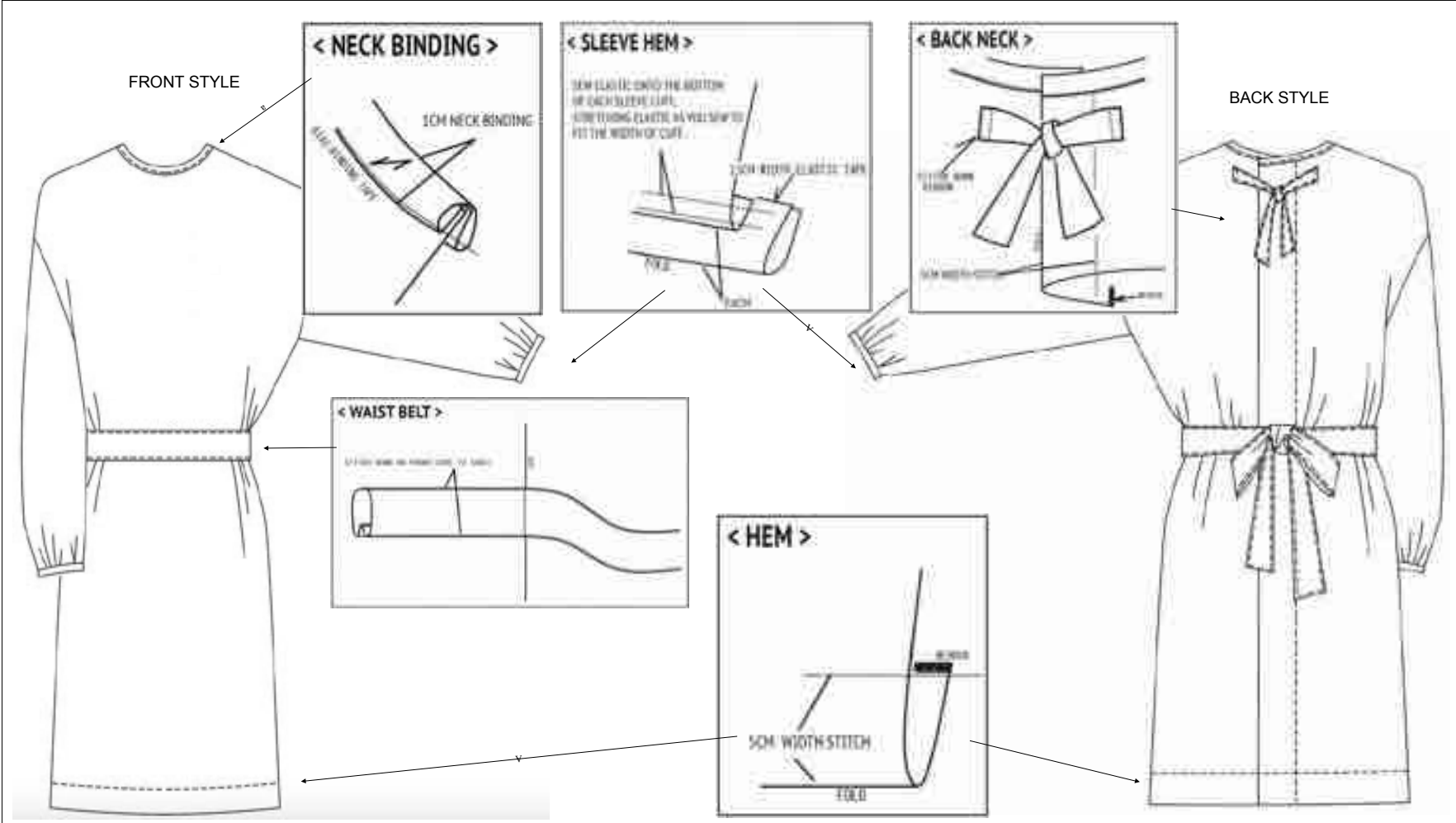
- SELF FABRIC (114 CM / 45" FABRIC WIDTH) : 3.3 MT / 3.7YARD
- SELF FABRIC (152 CM / 60" FABRIC WIDTH) : 2.6 MT / 2.9YARD
- TRIM (2.5 CM / 1" WIDTH ELASTIC TAPE) : 45 CM / 18"

***IF ELASTIC TAPE IS UNAVAILABLE, USE RIB, JERSEY ETC AS SUBSTITUTION**

LEVEL 1/2 ISOLATION GOWN (COVID-19 CRISIS RESPONSE)

DETAIL SHEET

STYLE NO		FABRICATION		INITIATED BY	FASHION GIRLS FOR HUMANITY	PAGE	2
DESCRIPTION	ISOLATION GOWN	FABRIC WIDTH		CREATED BY	FASHION GIRLS FOR HUMANITY	DATE	

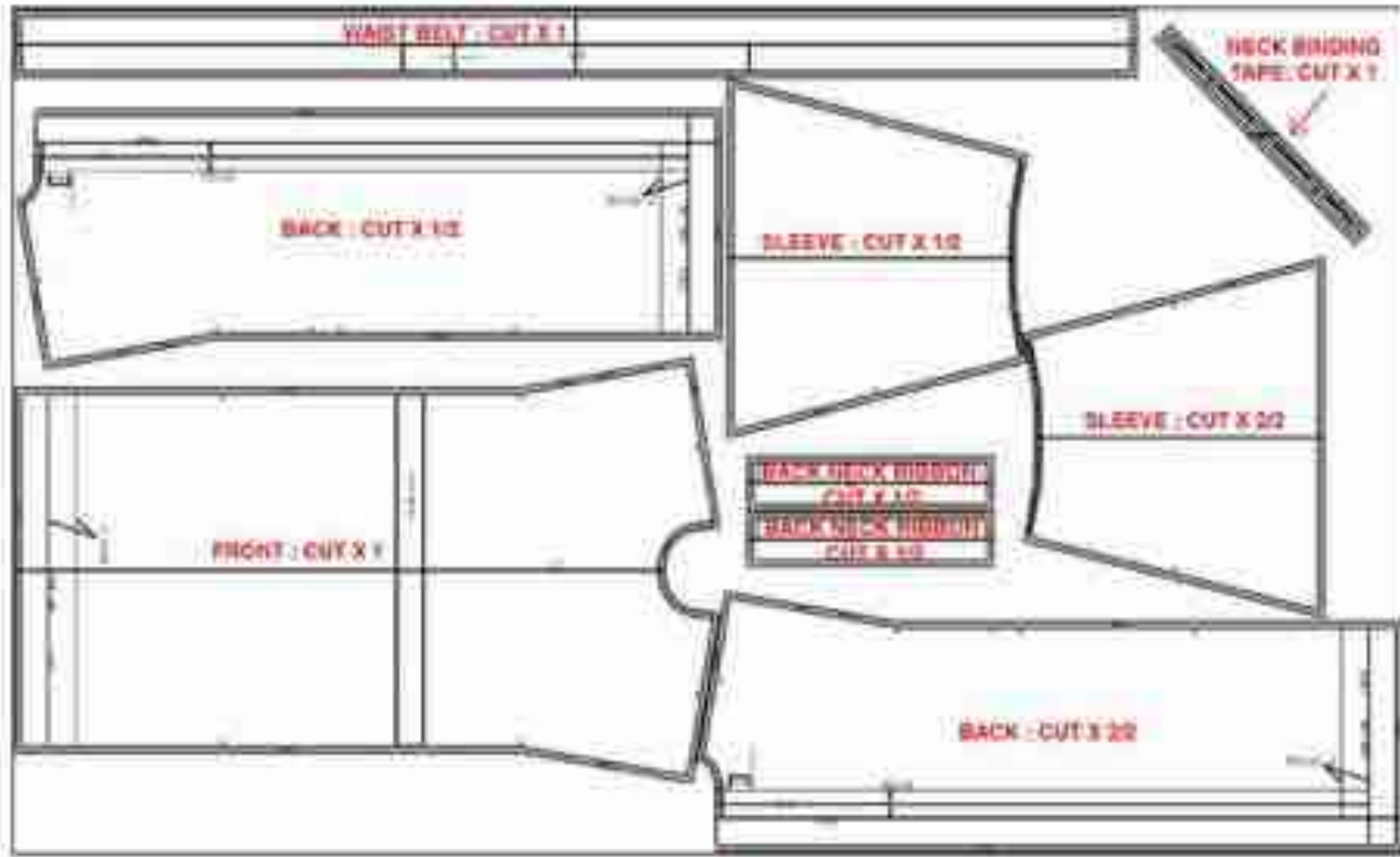


MEMO

LEVEL 1/2 ISOLATION GOWN (COVID-19 CRISIS RESPONSE)				MARKING-1			
STYLE NO		FABRICATION		INITIATED BY	FASHION GIRLS FOR HUMANITY	PAGE	3
DESCRIPTION	ISOLATION GOWN	FABRIC WIDTH	60"	CREATED BY	FASHION GIRLS FOR HUMANITY	DATE	

YIELD : 2.9 YARD (2.6m)

60" width
(152cm)

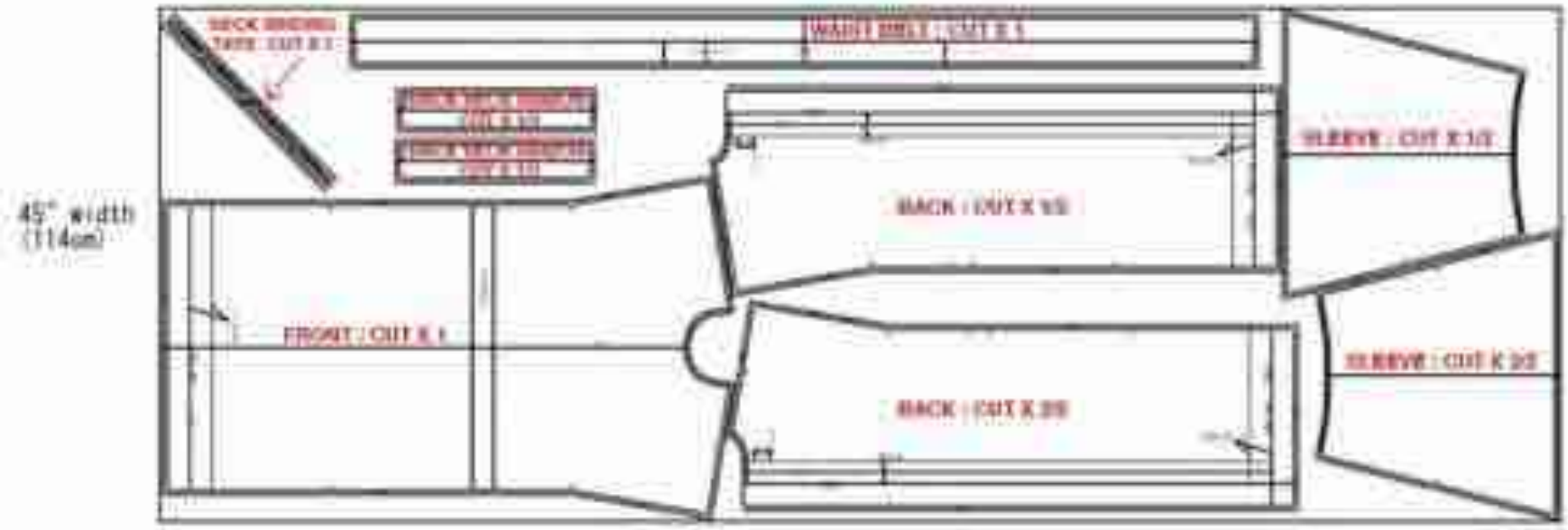


MEMO

LEVEL 1/2 ISOLATION GOWN (COVID-19 CRISIS RESPONSE) **MARKING-2**

STYLE NO		FABRICATION		INITIATED BY	FASHION GIRLS FOR HUMANITY	PAGE	4
DESCRIPTION	ISOLATION GOWN	FABRIC WIDTH	45"	CREATED BY	FASHION GIRLS FOR HUMANITY	DATE	

YIELD : 3.7 YARD (3.3m)

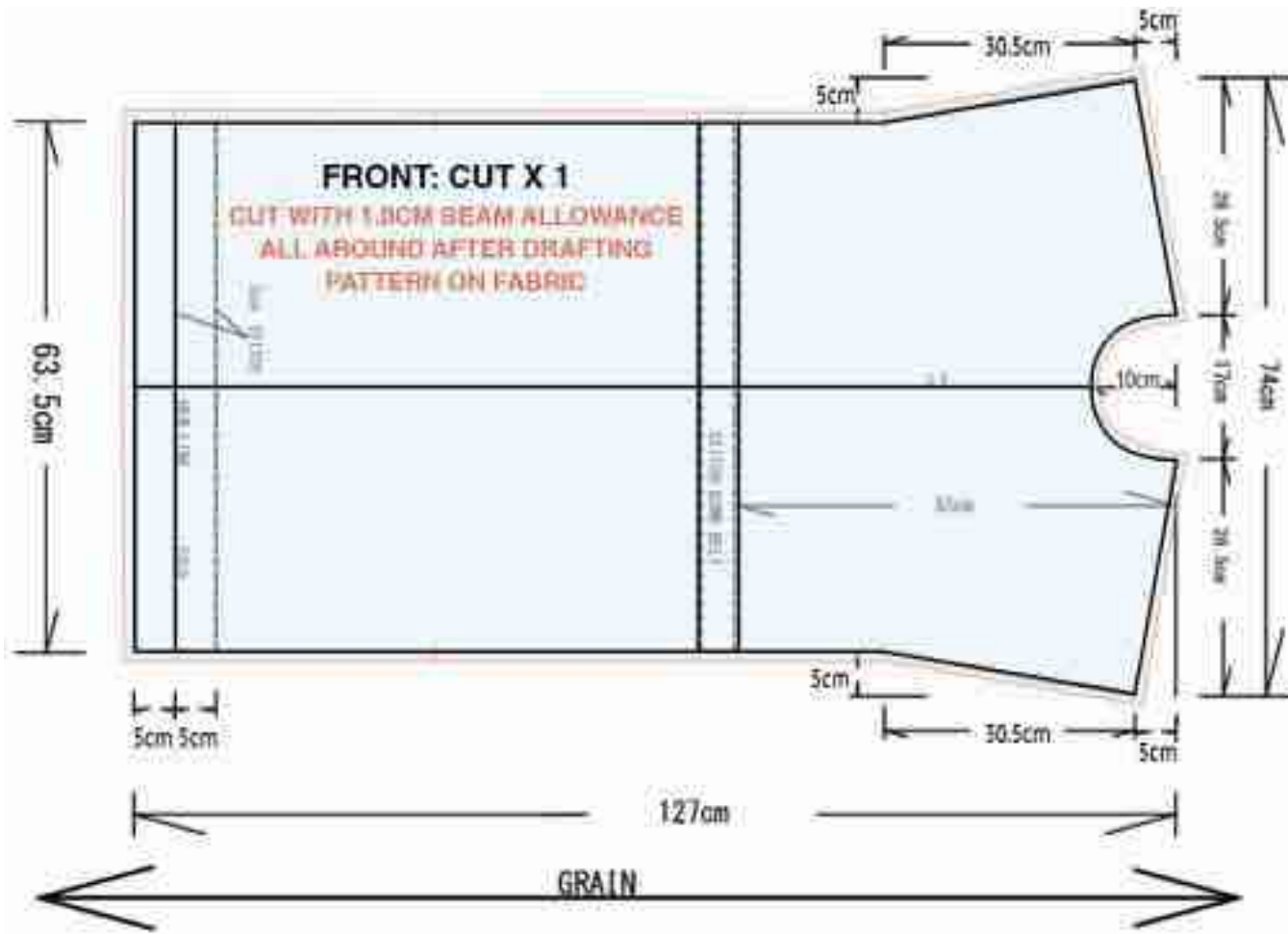


MEMO

LEVEL 1/2 ISOLATION GOWN (COVID-19 CRISIS RESPONSE)

CUT - #FRONT

STYLE NO		FABRICATION		INITIATED BY	FASHION GIRLS FOR HUMANITY	PAGE	5
DESCRIPTION	ISOLATION GOWN	FABRIC WIDTH		CREATED BY	FASHION GIRLS FOR HUMANITY	DATE	

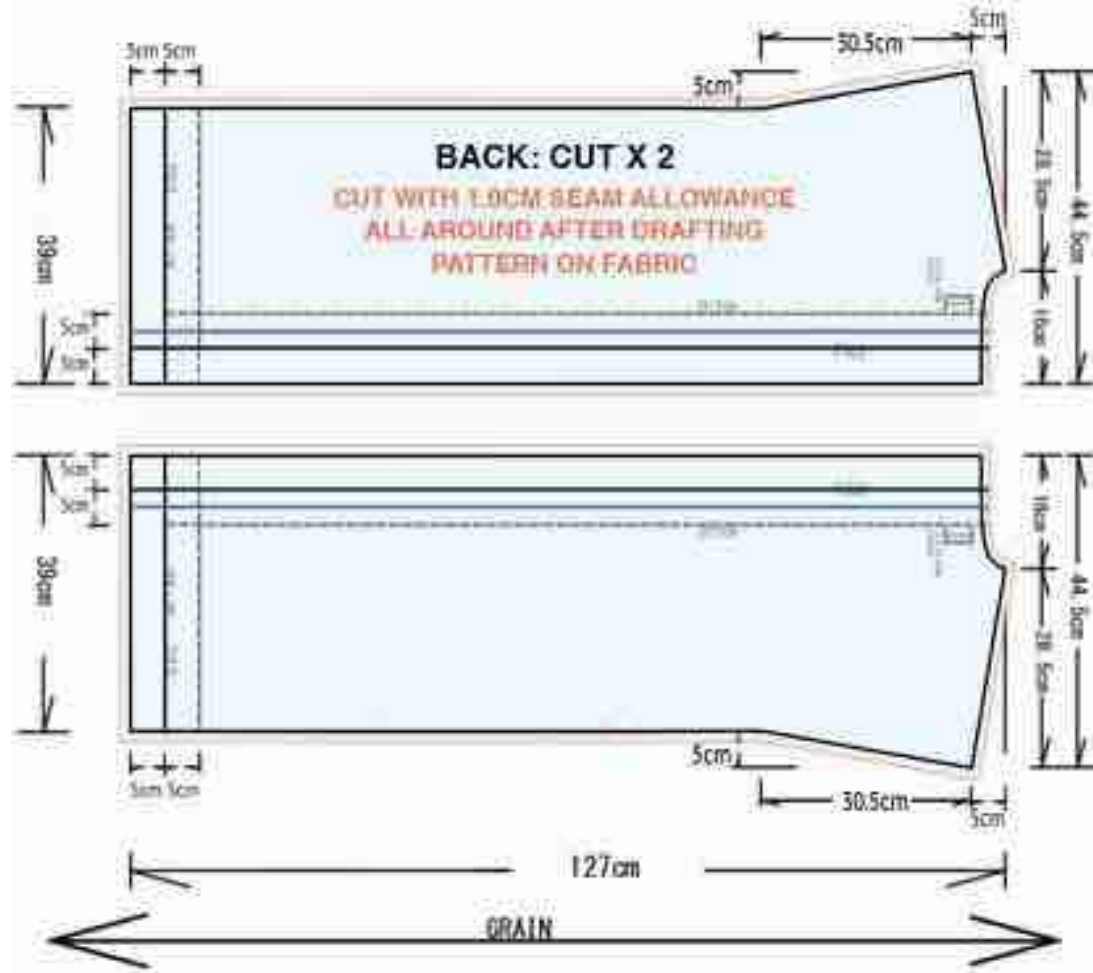


MEMO

LEVEL 1/2 ISOLATION GOWN (COVID-19 CRISIS RESPONSE)

CUT - #BACK

STYLE NO		FABRICATION		INITIATED BY	FASHION GIRLS FOR HUMANITY	PAGE	6
DESCRIPTION	ISOLATION GOWN	FABRIC WIDTH		CREATED BY	FASHION GIRLS FOR HUMANITY	DATE	



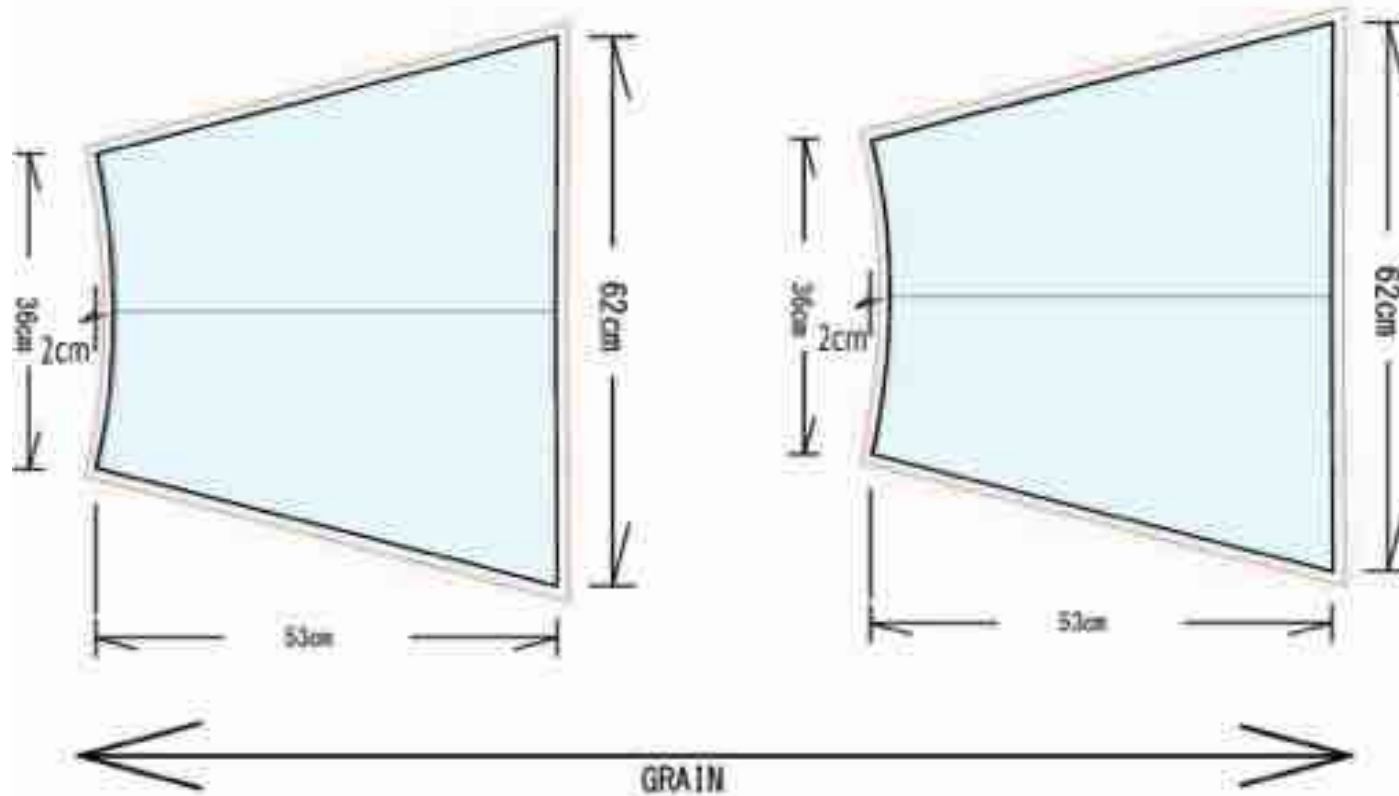
MEMO

LEVEL ½ ISOLATION GOWN (COVID-19 CRISIS RESPONSE)**CUT – #SLEEVE**

STYLE NO		FABRICATION		INITIATED BY	FASHION GIRLS FOR HUMANITY	PAGE	7
DESCRIPTION	ISOLATION GOWN	FABRIC WIDTH		CREATED BY	FASHION GIRLS FOR HUMANITY	DATE	

SLEEVE: CUT X 2

**CUT WITH 1.0CM SEAM ALLOWANCE
ALL AROUND AFTER DRAFTING
PATTERN ON FABRIC.**

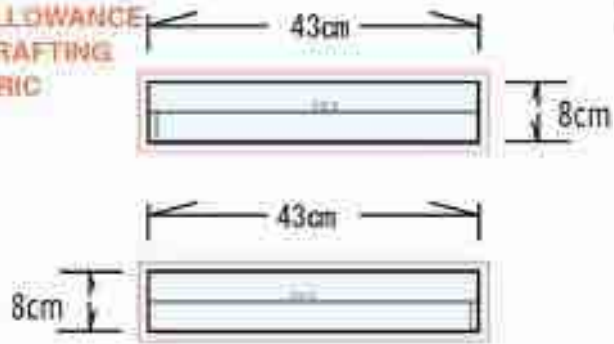


MEMO

LEVEL 1/2 ISOLATION GOWN (COVID-19 CRISIS RESPONSE)				CUT - #BELT + TAPE			
STYLE NO		FABRICATION		INITIATED BY	FASHION GIRLS FOR HUMANITY	PAGE	8
DESCRIPTION	ISOLATION GOWN	FABRIC WIDTH		CREATED BY	FASHION GIRLS FOR HUMANITY	DATE	

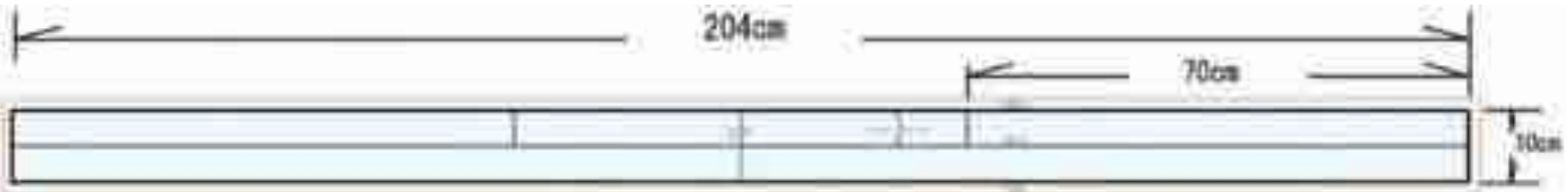
BACK NECK RIBBON: CUT X 2

CUT WITH 1.0CM SEAM ALLOWANCE
ALL AROUND AFTER DRAFTING
PATTERN ON FABRIC



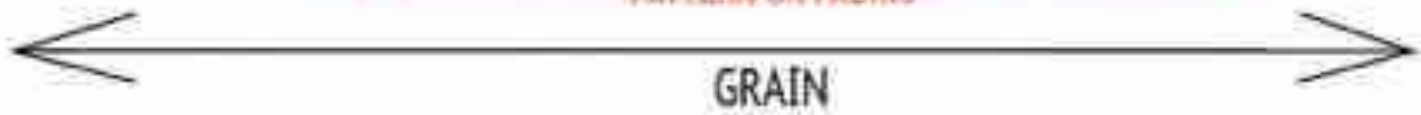
NECK BINDING TAPE: CUT X 1

CUT WITH 1.0CM SEAM ALLOWANCE
ALL AROUND AFTER DRAFTING
PATTERN ON FABRIC



WAIST BELT: CUT X 1

CUT WITH 1.0CM SEAM ALLOWANCE ALL AROUND AFTER DRAFTING
PATTERN ON FABRIC



MEMO

Blank area for additional notes or instructions.

LEVEL 1/2 ISOLATION GOWN (COVID-19 CRISIS RESPONSE)

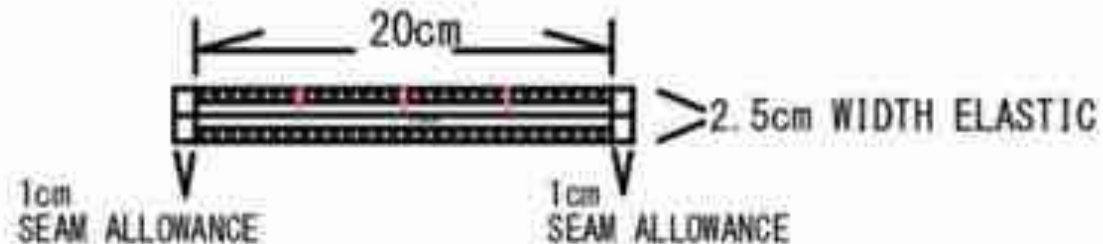
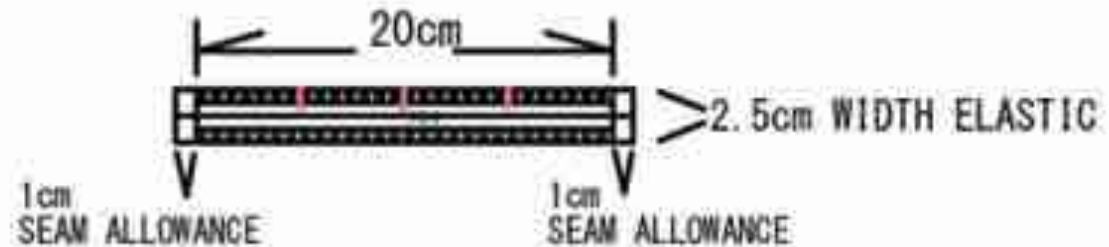
CUT – #ELASTIC TAPE

STYLE NO		FABRICATION		INITIATED BY	FASHION GIRLS FOR HUMANITY	PAGE	9
DESCRIPTION	ISOLATION GOWN	FABRIC WIDTH		CREATED BY	FASHION GIRLS FOR HUMANITY	DATE	

SLEEVE HEM ELASTIC TAPE: CUT X 2

ELASTIC TAPE IS A TRIM

FINISHED SPEC SHOULD BE 20.0CM
WITH 1.0CM SEAM ALLOWANCE ON EACH SIDE.



MEMO

LEVEL ½ ISOLATION GOWN (COVID-19 CRISIS RESPONSE)				SEWING INSTRUCTION			
STYLE NO		FABRICATION		INITIATED BY	FASHION GIRLS FOR HUMANITY	PAGE	10
DESCRIPTION	ISOLATION GOWN	FABRIC WIDTH		CREATED BY	FASHION GIRLS FOR HUMANITY	DATE	

SEWING INSTRUCTION :

1. After cutting all parts, finish seam allowance of FRONT, BACK, and SLEEVE with serge/overlock.
Do not serge/overlock the neckline of FRONT, BACK and hem of SLEEVE.
2. Sew the shoulder seams of FRONT and BACK.
3. Attach the elastic tape to the hem of the SLEEVE, by stretching the elastic to match the measurement of the sleeve opening.
4. Sew the armhole of the SLEEVE to the armhole of the FRONT and BACK.
Sew along the bottom edges of the SLEEVE and along the sides of the gown body.
5. Fold over the edge of the body hem by 6.0 cm two times and sew with a 5.0 cm top stitch.
6. Fold over the right BACK and left BACK center back edge by 6.0 cm two times and sew with a 5.0 cm top stitch.
7. Fold the NECK BINDING TAPE in half to create a 1.0 cm width tape.
Insert the neckline of body between the tape and sew together with edge stitch.
8. Create two 4.0 cm width BACK NECK RIBBONS.
Sew the BACK NECK RIBBONS to each side of the BACK, 2.5 cm below the back neck point and 7.5 cm from the edge of the center back.

MEMO

LEVEL ½ ISOLATION GOWN (COVID-19 CRISIS RESPONSE)				SEWING DETAIL PHOTO			
STYLE NO		FABRICATION		INITIATED BY	FASHION GIRLS FOR HUMANITY	PAGE	11
DESCRIPTION	ISOLATION GOWN	FABRIC WIDTH		CREATED BY	FASHION GIRLS FOR HUMANITY	DATE	
1.		3.		4.		5.	
2.							
6.	 	7.	 	8.		9.	

LEVEL ½ ISOLATION GOWN (COVID-19 CRISIS RESPONSE)				SIZE MEASUREMENTS			
--	--	--	--	--------------------------	--	--	--

STYLE NO		FABRICATION		INITIATED BY	FASHION GIRLS FOR HUMANITY	PAGE	12
DESCRIPTION	ISOLATION GOWN	FABRIC WIDTH		CREATED BY	FASHION GIRLS FOR HUMANITY	DATE	

FRONT STYLE



BACK STYLE



SPECK

- ① CHEST : **127CM**
- ② SWEEP : **127CM**
- ③ BODY LENGTH (FRONT : HIGH POINT SHOULDER TO HEM) : **122CM**
- ④ BODY LENGTH (BACK : CENTER BACK TO HEM) : **119.5CM**
- ⑤ SLEEVE LENGTH (CENTER BACK TO SHOULDER POINT TO SLEEVE HEM) : **89CM**
- ⑥ CUFF OPENING : **20CM**

***MEASUREMENTS ARE WHEN THE GOWN IS LAID ON FLAT SURFACE**

TOP 1 (MATERIAL) 75% COTTON 25% POLYESTER



SLEEVE DETAILS (IMPORTANT TO HAVE ELASTICS)

FRONT BOTTOM DETAILS

NECK DETAILS



● FASHION GIRLS FOR HUMANITY

Level 1/2 Isolation Gown (COVID-19 Crisis Response)		STYLE IMAGE REFERENCE	
Style No	IG1/2	Fabrication	Cotton Poly OR Polyester
Description	Re-engineered Isolation Gown	Initiated by	Fashion Girls for Humanity
Date	4/17/20	Created by	Fashion Girls for Humanity



FRONT



BACK

Size L HALYARD* Tri-Layer AAMI Level 2

FRONT



BACK





4/18/20 Updated youtube tutorial available

4/18/20 V4 techpack issued. Accommodating new suggested sleeve pattern and length. Location of belt. Suggested finish for hems/seam.

Use of fold over elastics for neck and cuffs advised. Twill tape as belt and back ties suggested.

4/22 Trim kit selling starts online shorturl.at/aLOXZ

4/30 Final version scale pattern available with complete tech pack.

Currently working on printing paper pattern distribution --soon available online for sale

Early May Marking and grading available for production

Early May **Fabric** may be available online to purchase (pre cut / uncut)

Feedback welcome!

Also you can donate <https://www.fashiongirlsforhumanity.org/> so we can start making gowns!